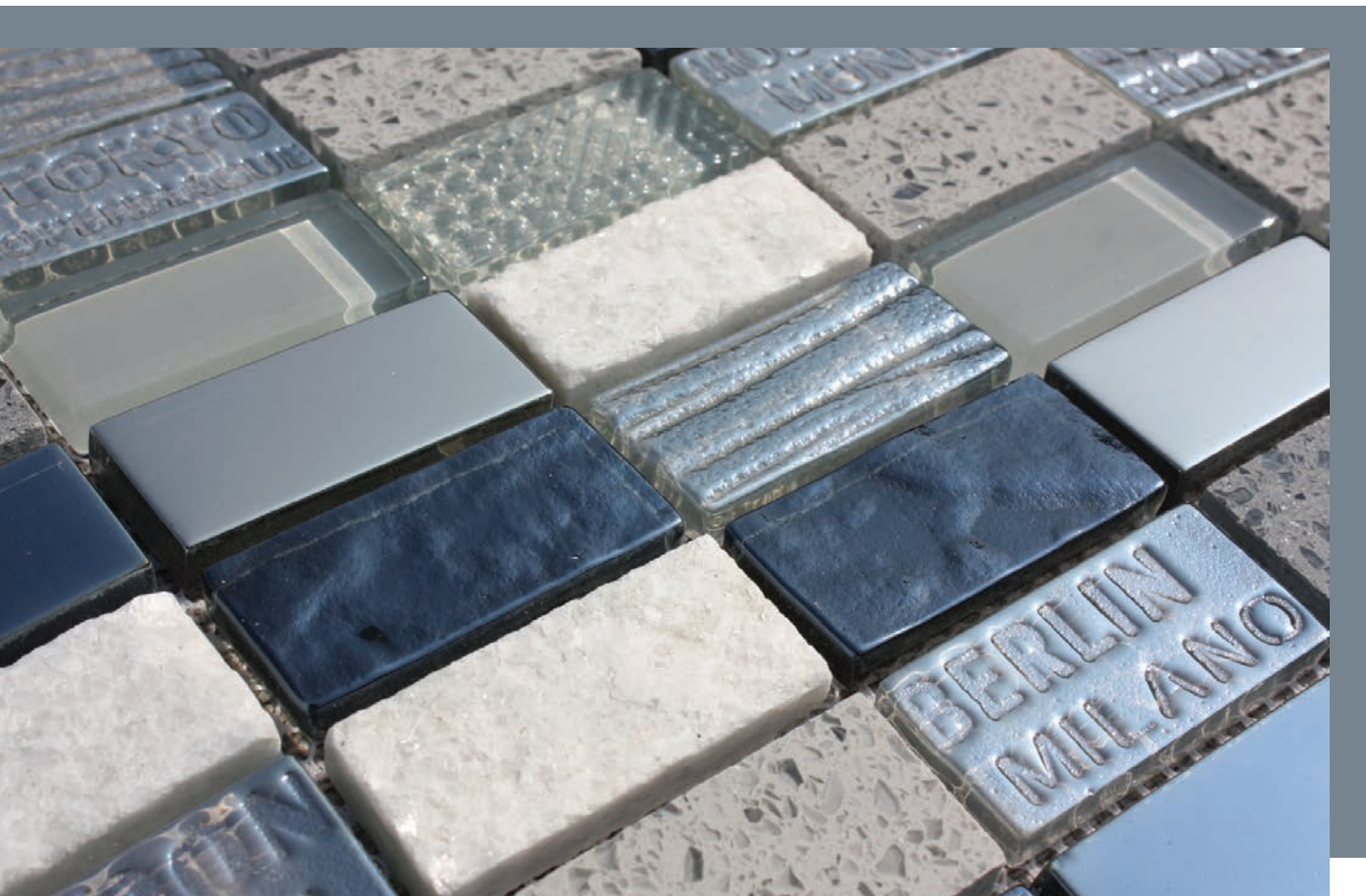




# Waxman Ceramics

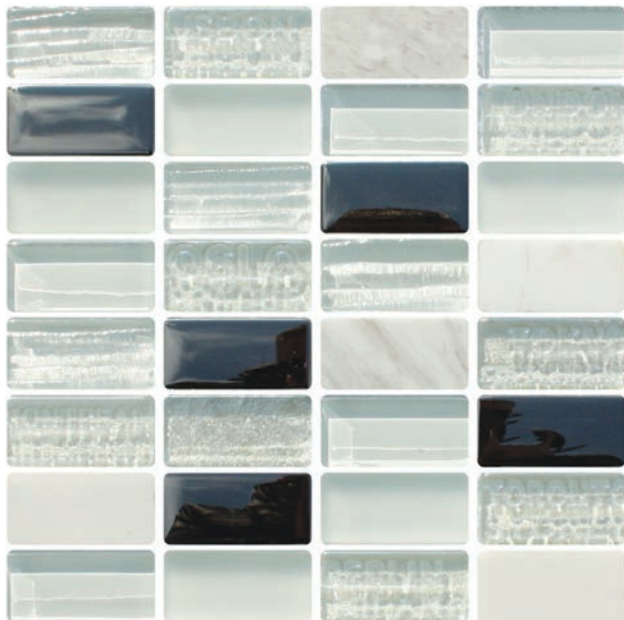


## CITIES

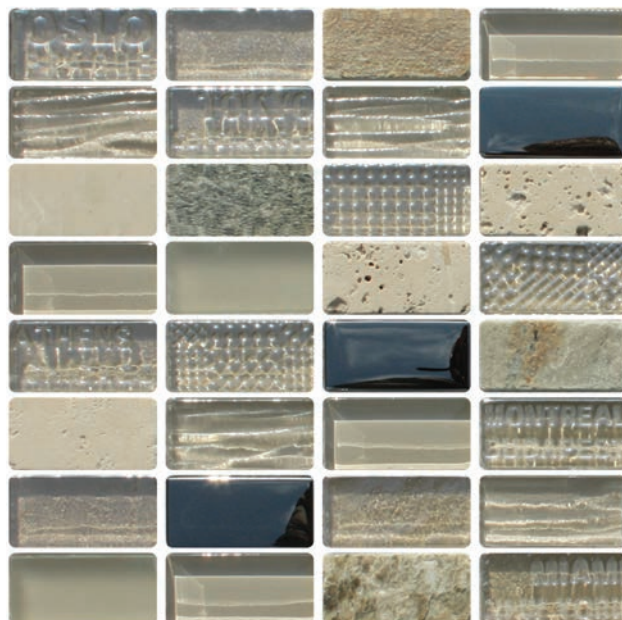
Glass & Natural Stone Mix  
25x50mm



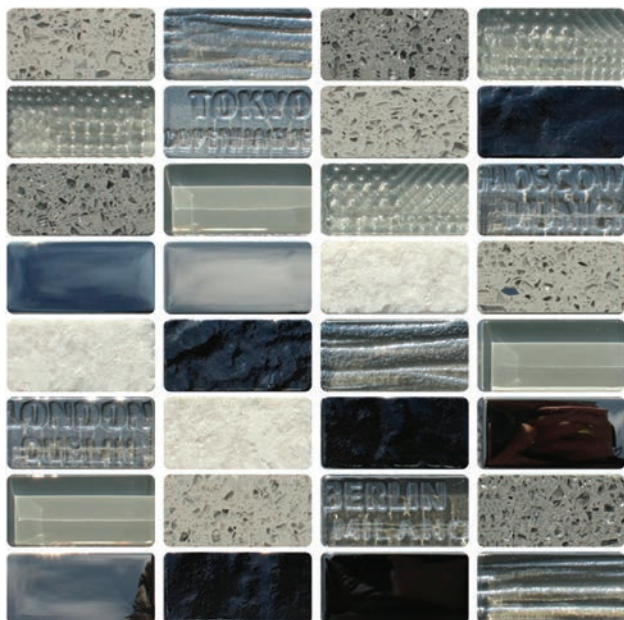
# COLOURS



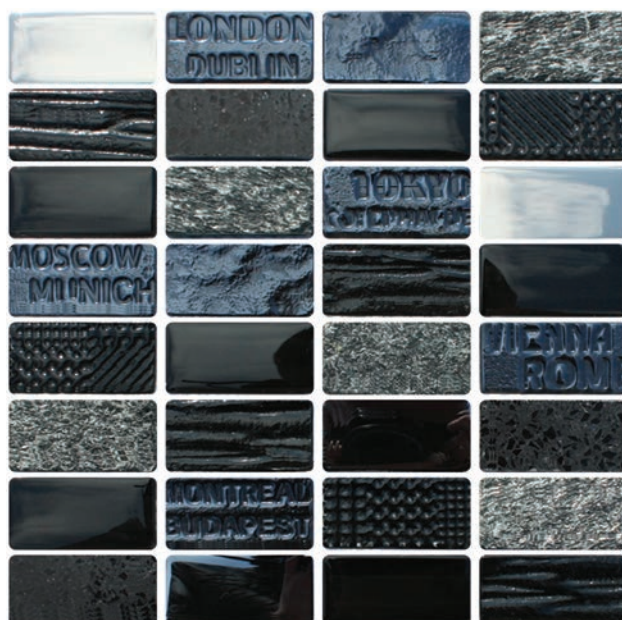
White  
25x50mm



Beige  
25x50mm

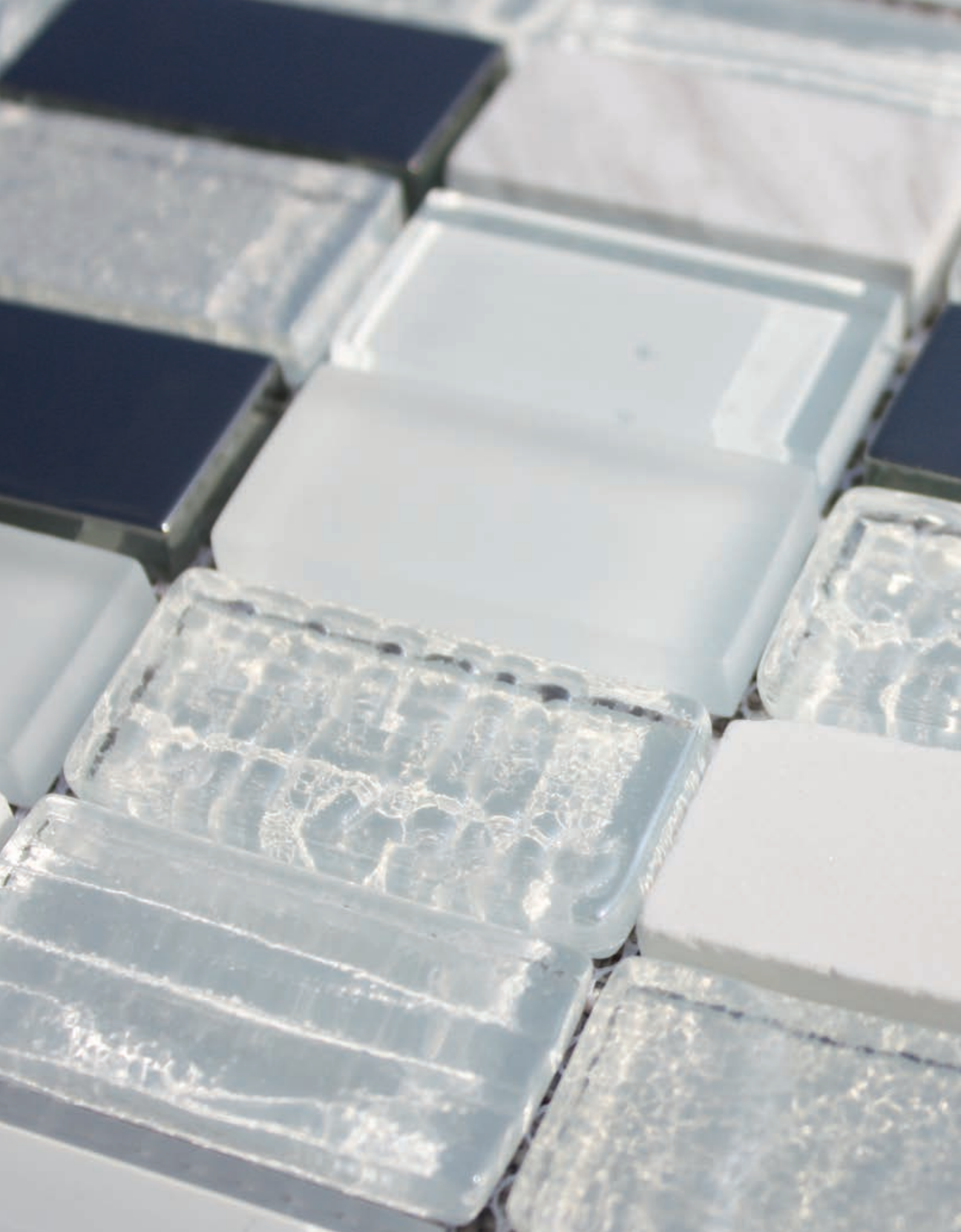


Grey  
25x50mm



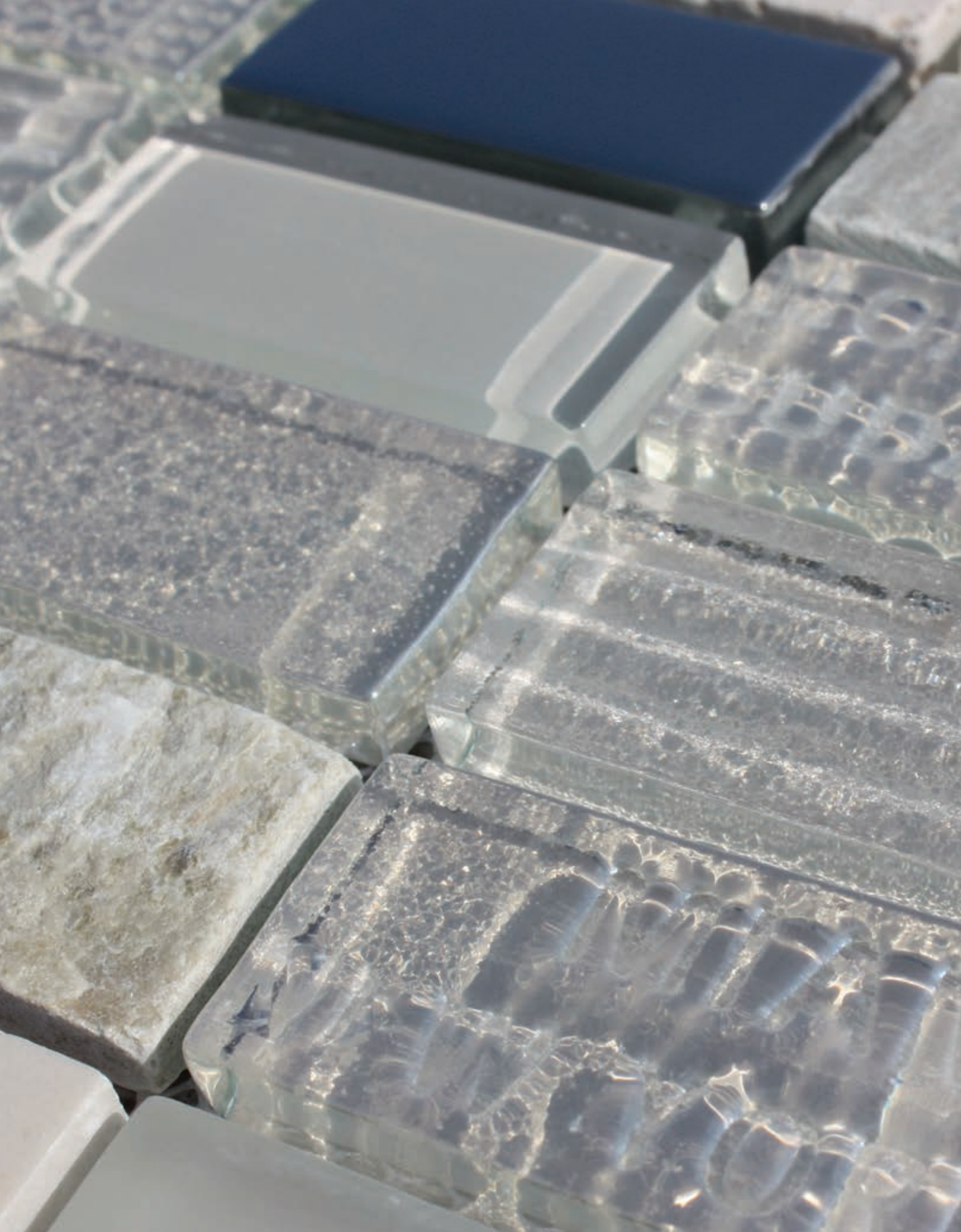
Black  
25x50mm





White - 25x50mm





Beige - 25x50mm





Grey - 25x50mm





Black - 25x50mm





Black - 25x50mm

SPECIFICATION



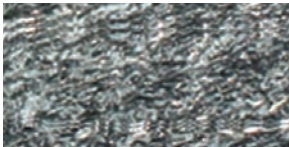
Gloss Finish



Textured Finish




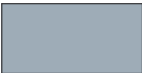
City Font Finish



Natural Stone Finish

Vitrified		
	Internal	External
Walls	✓	✓
Floors		

	
SIZE	25x50mm
THICKNESS	8mm

12 PCS						
6 PCS						
Sheet size		29.5x29.5cm				
Backing		Mesh backing				



# Waxman Ceramics

---

**Head Office**                      **01422 311331**

Grove Mills  
Elland  
West Yorkshire  
HX5 9DZ  
England

Email            [info@waxmanceramics.co.uk](mailto:info@waxmanceramics.co.uk)  
Web              [www.waxmanceramics.co.uk](http://www.waxmanceramics.co.uk)

**Waxman Ceramics Ltd - Part of the Waxman Group**

The information contained within this document is, to the best of our knowledge, accurate at the time of production.  
We reserve the right to modify this document at any time.  
Whilst every attempt has been made to accurately reproduce colours and textures, images used within this document are only intended as a guide.  
Please refer to actual product samples before specifying or ordering.

REF: 19/06