



Waxman Ceramics



BORNEO

Glazed Ceramic & Glazed Porcelain Tiles

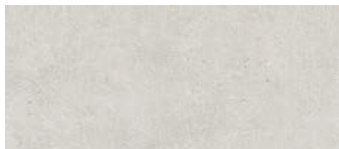


tile
collection

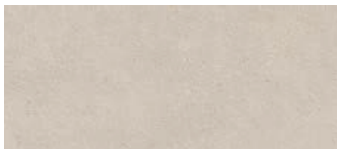
Glazed Ceramic

BORNEO

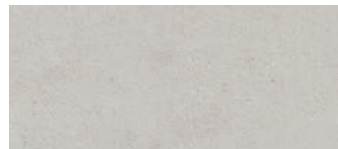
COLOURS



Borneo White Matt
30x75cm



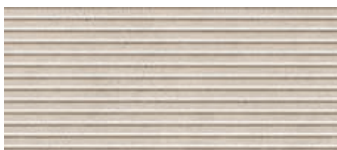
Borneo Sand Matt
30x75cm



Borneo Pearl Matt
30x75cm



Borneo Esir White Matt
30x75cm



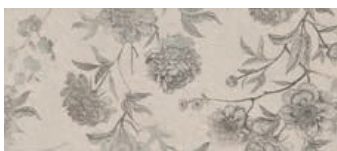
Borneo Esir Sand Matt
30x75cm



Borneo Esir Pearl Matt
30x75cm



Borneo Malone White Matt
30x75cm



Borneo Malone Sand Matt
30x75cm

Glazed Porcelain

BORNEO

COLOURS



Borneo White Matt
75x75cm

④



Borneo Sand Matt
75x75cm

④



Borneo Pearl Matt
75x75cm

④



Borneo Pearl / Borneo Pearl Esir - 30x75cm / Borneo Pearl - 75x75cm



Borneo Malone Sand - 30x75cm / Borneo Sand - 75x75cm



Borneo White - 75x75cm

SPECIFICATION AND PACKING

Glazed Ceramic

Suitability	Thickness	Walls		Floors		Frostproof	Colour Variation
		Internal	External	Internal	External		
30x75cm Rectified	8mm	✓				No	V2

Packing	Pcs / ctn	M ² / Ctn	Kg / Ctn	Ctns / Pallet	M ² / Pallet
30x75cm Rectified	7	1.58	21	54	85.32

Glazed Porcelain

Suitability	Thickness	Walls		Floors		Frostproof	Colour Variation
		Internal	External	Internal	External		
75x75cm Rectified	9mm	✓	✓	✓		Yes	V2

Packing	Pcs / ctn	M ² / Ctn	Kg / Ctn	Ctns / Pallet	M ² / Pallet
75x75cm Rectified	2	1.13	24.17	48	54.24

Waxman Ceramics

Head Office **01422 311331**

Grove Mills
Elland
West Yorkshire
HX5 9DZ
England

Email info@waxmanceramics.co.uk
Web www.waxmanceramics.co.uk

Waxman Ceramics Ltd - Part of the Waxman Group

The information contained within this document is, to the best of our knowledge, accurate at the time of production.

We reserve the right to modify this document at any time.

Whilst every attempt has been made to accurately reproduce colours and textures, images used within this document are only intended as a guide.
Please refer to actual product samples before specifying or ordering.