



Waxman Ceramics



ROCKLAND

Glazed Porcelain Tiles



COLOURS



Pearl
30x60cm

4



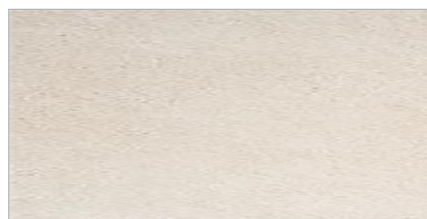
Grey
30x60cm

4



Anthracite
30x60cm

3



Mink
30x60cm

4

COLOURS



Pearl
60x60cm Rectified

4



Grey
60x60cm Rectified

4





Anthracite
60x60cm Rectified

3



Mink
60x60cm Rectified

4

Slip Resistance		
		+40
		

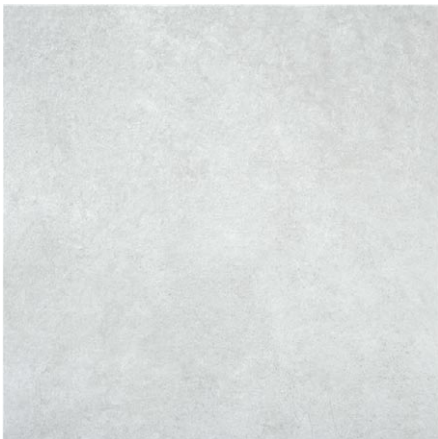
COLOURS

20
mm



Pearl
60x60cm Rectified

4



Grey
60x60cm Rectified

4



Anthracite
60x60cm Rectified

3





Mink
60x60cm Rectified

4

Thickness

↓
20mm
↑

Slip Resistance		
	R11	+40
	C	



Anathracite 60x60cm / Grey 30x60cm



Mink 60x60cm

SPECIFICATION & PACKING

Glazed Porcelain

Suitability	Thickness	Walls		Floors		Frostproof	Colour Variation
		Internal	External	Internal	External		
30x60cm	8.7mm	✓	✓	✓		Yes	V2
60x60cm Rectified	9.8mm	✓	✓	✓		Yes	V2
60x60cm (20) Rectified	20mm				✓	Yes	V2

Packing	Pcs / ctn	M² / Ctn	Kg / Ctn	Ctns / Pallet	M² / Pallet
30x60cm	7	1.26	22.92	48	60.48
60x60cm Rectified	4	1.42	28.47	36	50.98
60x60cm (20) Rectified	2	0.71	31.25	32	22.66

Waxman Ceramics

Head Office **01422 311331**

Grove Mills
Elland
West Yorkshire
HX5 9DZ
England

Email info@waxmanceramics.co.uk
Web www.waxmanceramics.co.uk

Waxman Ceramics Ltd - Part of the Waxman Group

The information contained within this document is, to the best of our knowledge, accurate at the time of production.
We reserve the right to modify this document at any time.
Whilst every attempt has been made to accurately reproduce colours and textures, images used within this document are only intended as a guide.
Please refer to actual product samples before specifying or ordering.

REF: 21/08